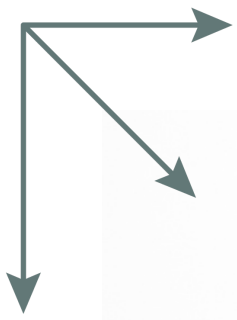


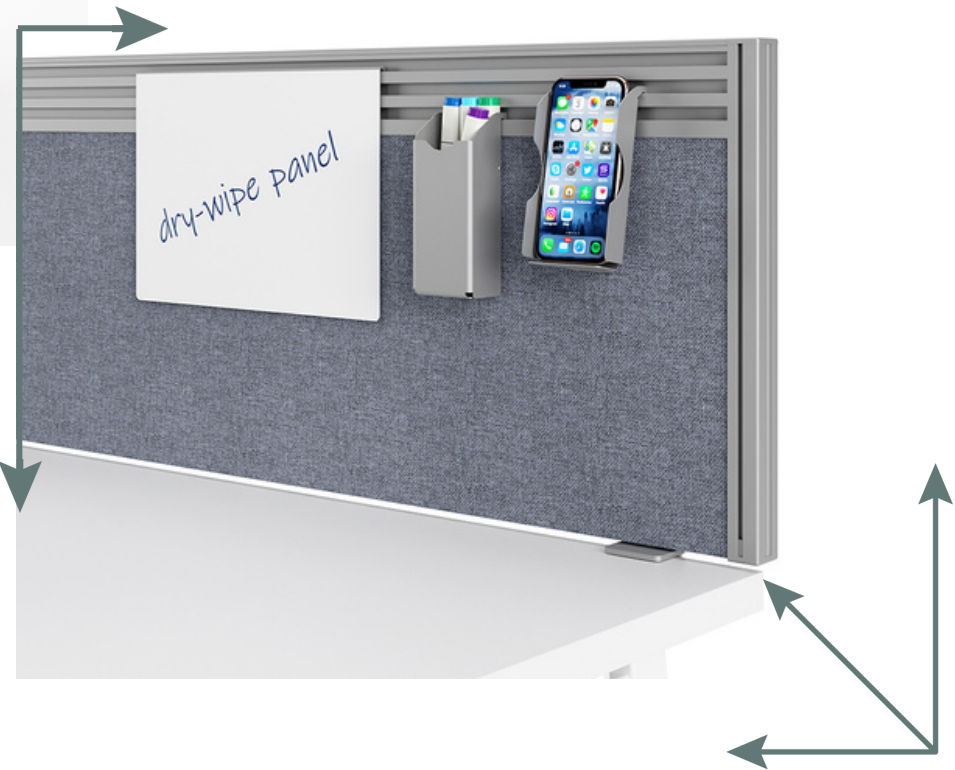
WORK  
SCALE.  
DESIGN

WS.D JOIN  
SCREEN SYSTEM

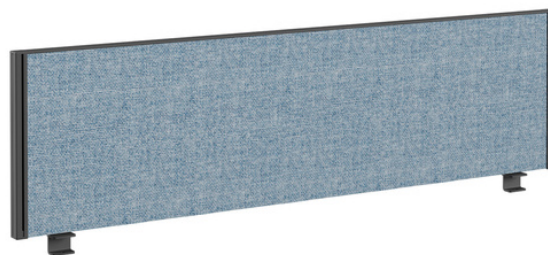




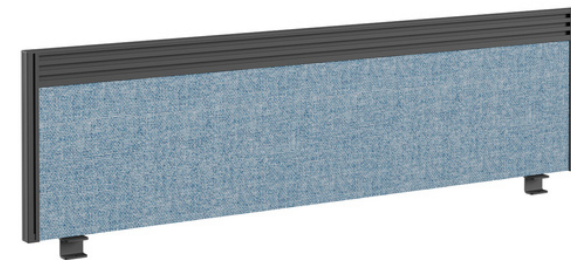
DESK SCREEN



# Desk Screens



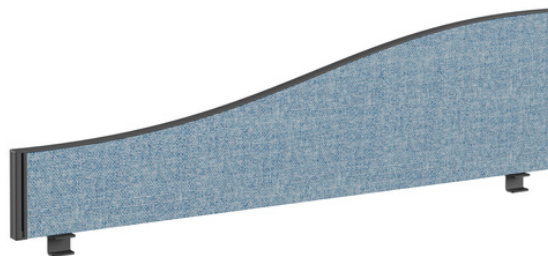
Straight



Straight - Tool Bar



Arc



Wave



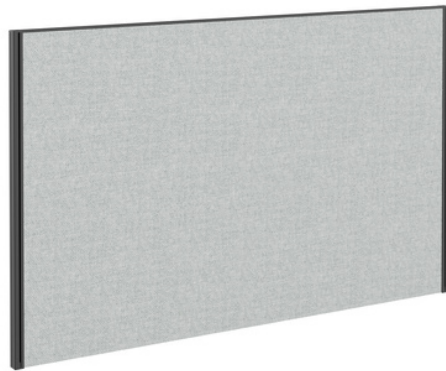
Straight - Part Glazed



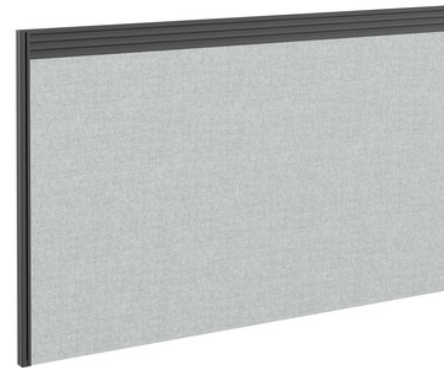


HEIGHT ADJUSTABLE

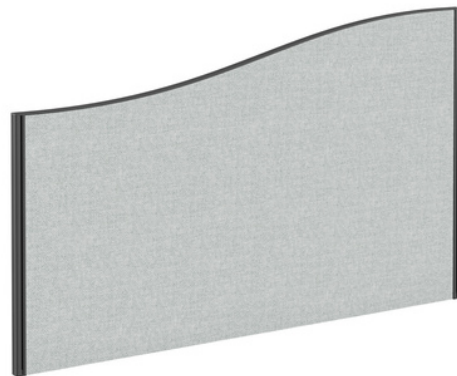
# Height Adjustable Desk Screens



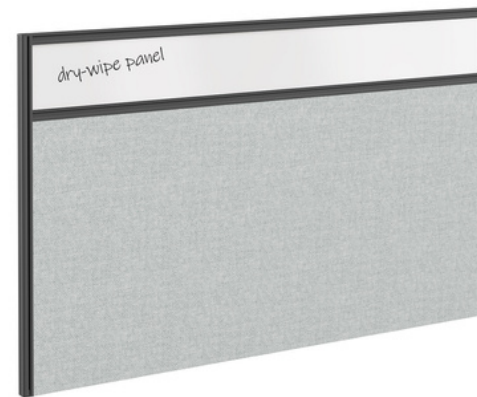
Straight



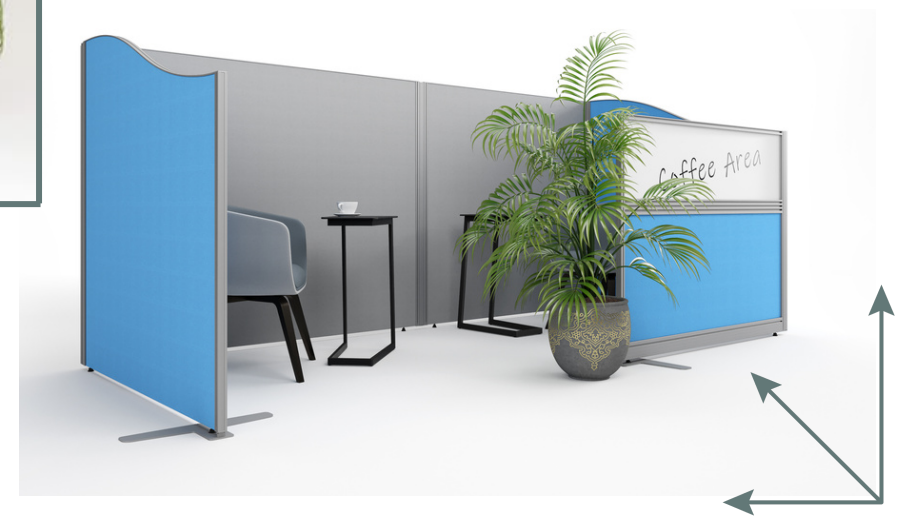
Straight - Tool Bar



Wave



Straight - Part Glazed



**FREESTANDING**



# Freestanding Screens



Straight



Arc



Wave



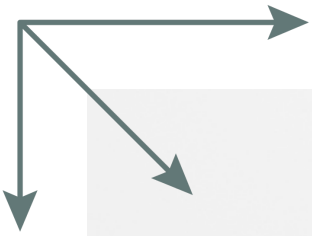
Straight - Tool Bar



Straight - Fully Glazed



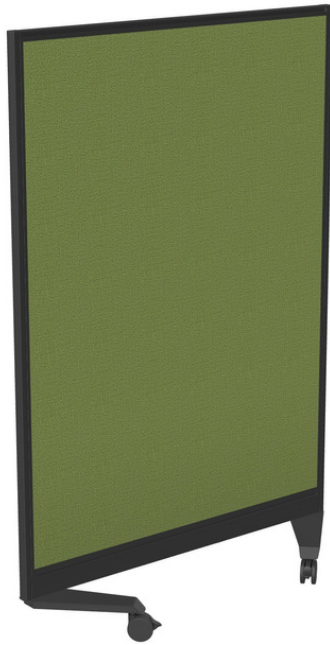
Straight - Part Glazed



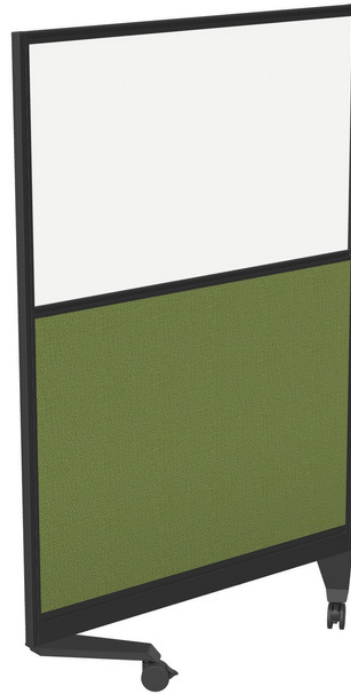
MOBILE SCREENS



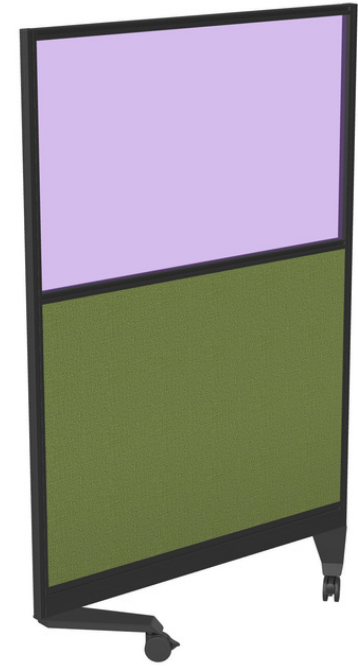
# Mobile Screens



Fabric



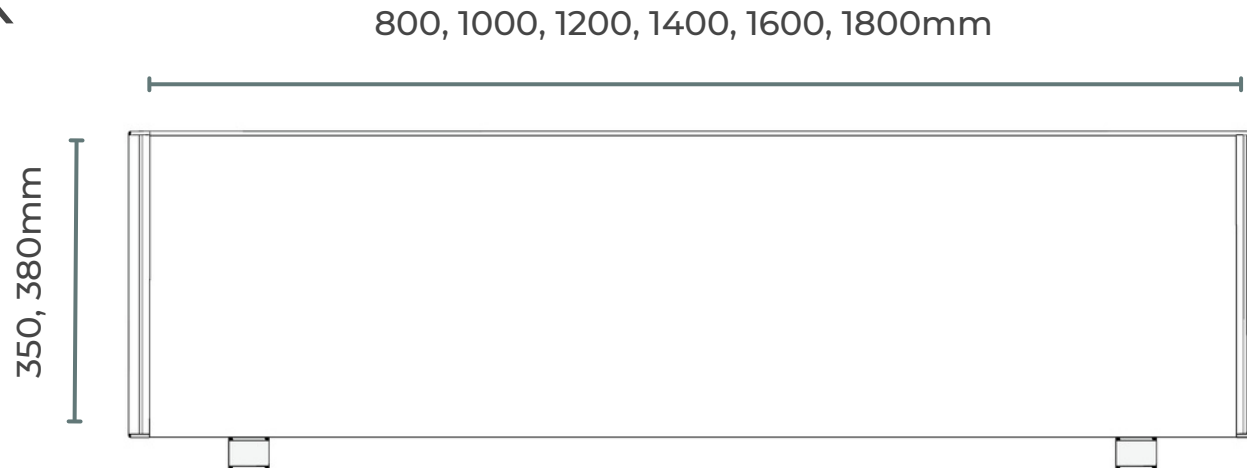
Whiteboard



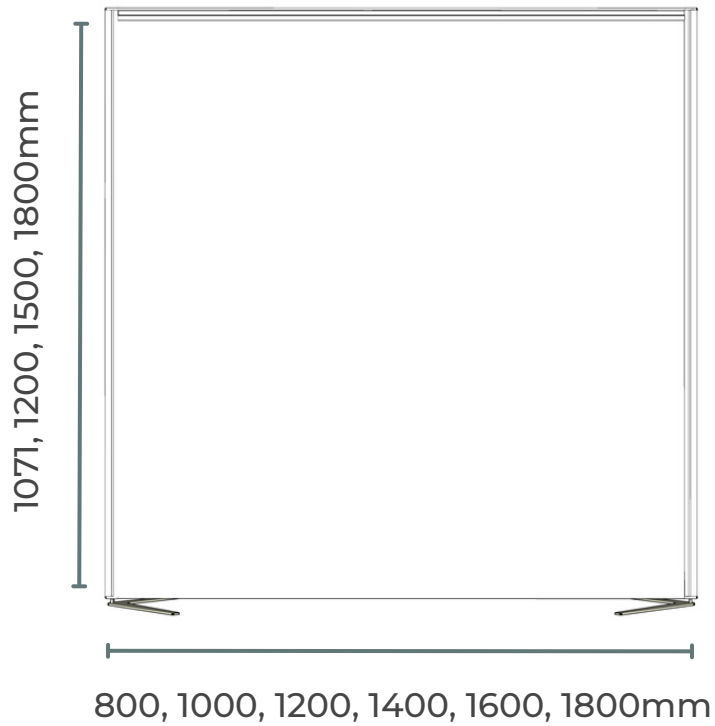
Glazed

# SIZES

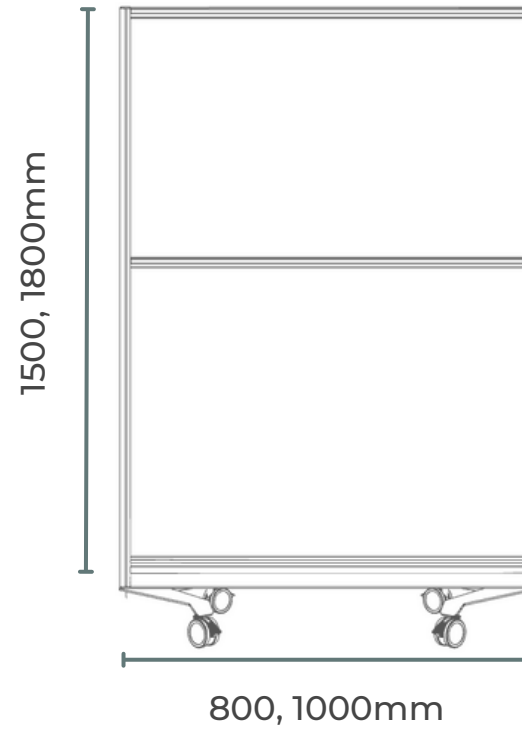
## DESK



## FREESTANDING



## MOBILE



All Join screens have a depth of 30mm



ACCESSORIES



# Accessories

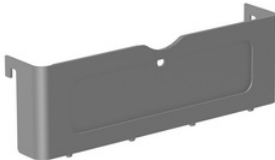
For screens with tool rails only.



A3 Letter Tray



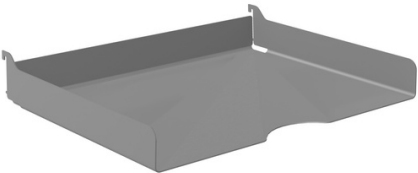
Pencil Pot



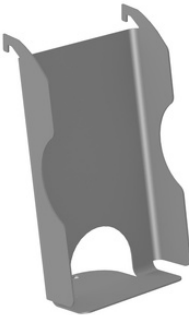
Desk Name/Number



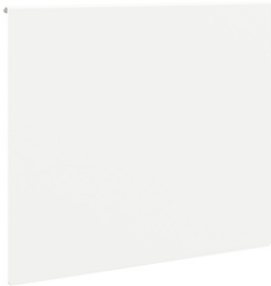
Whiteboard Pen Holder



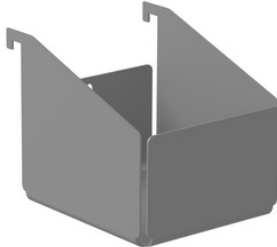
A4 Letter Tray



Phone Holder



Whiteboard



Trinket Pot

# SCREEN LINKING

## Straight Line Linking

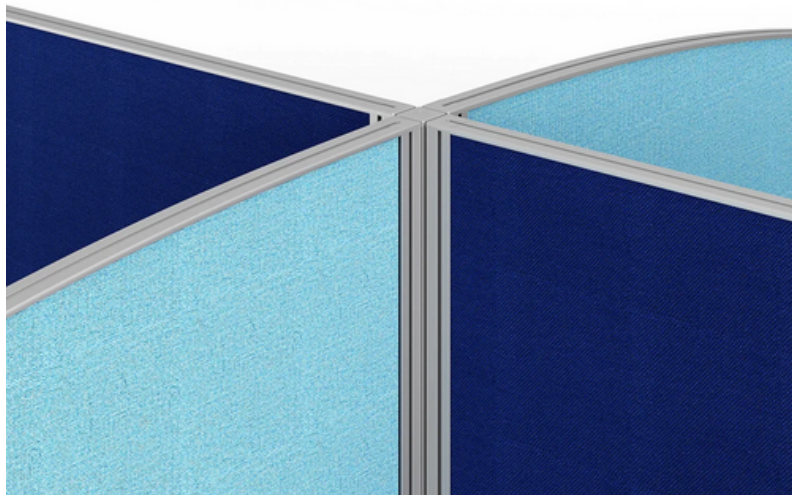
All Join screens are supplied as standard with in-line linking strips.

This means you can easily link together screens in a straight line without any additional parts.

## Return Screens / 120 Degree Linking

When requiring screen linking that is not a straight line there are several solutions with the Join screen system:

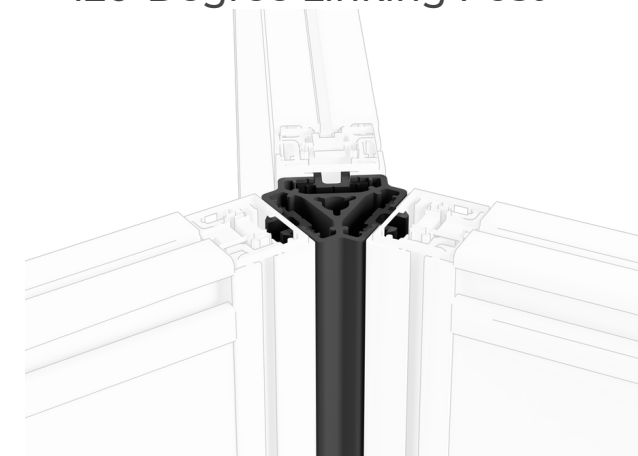
1. Linking Kit
2. Linking Post



4-Way Linking Post



120-Degree Linking Post



120-Degree Linking Post  
(end caps removed)

# WORK SCALE. DESIGN

Unit A, 82 James Carter Road,  
Mildenhall Industrial Estate  
Suffolk  
IP28 7DE  
United Kingdom

[sales@workscaledesign.com](mailto:sales@workscaledesign.com)



[workscaledesign.com](http://workscaledesign.com)



0044 20 8068 8098

